

Official Ballot

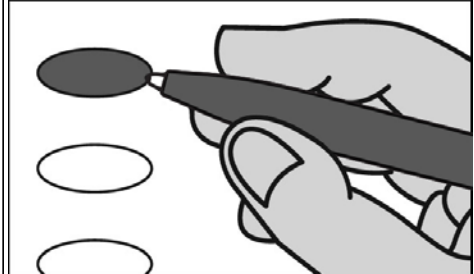
Nonpartisan Office

April 2, 2019

S34

Notice to voters: If you are voting on Election Day, your ballot must be initialed by two election inspectors. If you are voting absentee, your ballot must be initialed by the municipal clerk or deputy clerk. Your ballot may not be counted without initials. (See right column of ballot for initials.)

General Instructions



If you make a mistake on your ballot or have a question, ask an election inspector for help. (Absentee voters: Contact your municipal clerk.)

To vote for a name on the ballot, fill in the oval next to the name like this: ●

To vote for a name that is not on the ballot, write the name on the line marked "write-in" and fill in the oval next to the name like this: ●

Judicial

Justice of the Supreme Court Vote for 1

- Brian Hagedorn
- Lisa Neubauer
- write-in:

Court of Appeals Judge, District 4 Vote for 1

- Jennifer Nashold
- write-in:

Circuit Court Judge, Branch 1 Vote for 1

- Karl Hanson
- write-in:

Circuit Court Judge, Branch 2 Vote for 1

- Derrick A. Grubb
- write-in:

Circuit Court Judge, Branch 4 Vote for 1

- Daniel T. Dillon
- write-in:

Municipal

Town Board Chairperson Vote for 1

- Sean P. Snyder
- write-in:

Town Board Supervisor 1 Vote for 1

- Brad Inman
- Bill Redmer
- write-in:

Town Board Supervisor 2 Vote for 1

- Kim Dooley
- write-in:

Continue voting at top of next column.

Municipal (Cont.)

Town Clerk Vote for 1

- Sue Douglas
- write-in:

Town Treasurer Vote for 1

- Tippy L. Phillips
- write-in:

School District

Parkiew School District School Board Member Vote for not more than 3

- Dianne Myhre
- Jennie Krajeck
- Brett A. Farnsworth
- Tina Suiter-Meyers
- Zach Knutson
- write-in:
- write-in:
- write-in:

Official Ballot

Nonpartisan Office

April 2, 2019

for

T. Plymouth

Ballot Issued by

Initials of election inspectors

Absentee ballot issued by

Initials of municipal clerk or deputy clerk

If issued by SVDs, both SVDs must initial.

Certification of Voter Assistance

I certify that I marked or read aloud this ballot at the request and direction of a voter who is authorized under Wis. Stat. § 6.82 to receive assistance.

Signature of assistor

For Official Use Only

Inspectors: Identify ballots required to be remade.

Reason for remaking ballot:

- Overvoted
- Damaged
- Other

Original Ballot No. _____ or Duplicate Ballot No. _____

Initials of inspectors who remade ballot